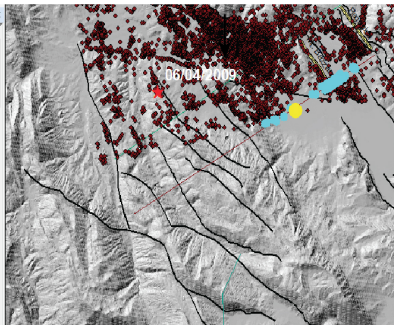


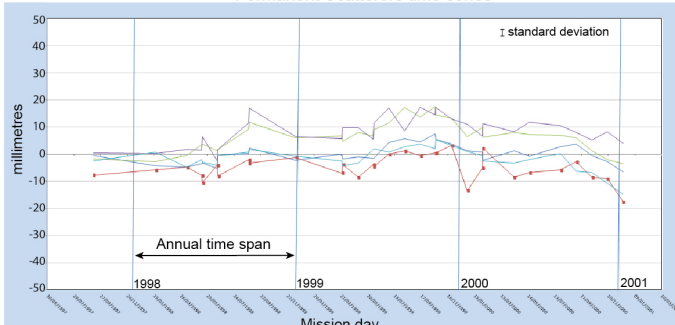
Permanent Scatterers codes

Point	Shape	CODE	VEL	V	STDE
889	Point	A3000	0.15	0.6	
890	Point	A3002	0.05	0.6	
1802	Point	A3010	0.55	0.6	
999	Point	A3019	0.4	0.7	
29	Point	A3492	0.58	0.5	
19	Point	A3500	-2.03	0.6	
1	Point	A3509	1.12	0.6	
22	Point	A3462	0.47	0.6	
992	Point	A30VP	0.86	0.6	
60	Point	A2486	-0.63	0	
499	Point	A3714	-1.28	0.6	
310	Point	A2891	1.93	0.6	
302	Point	A2817	1.38	0.6	
1021	Point	A2841	0.19	0.6	
1344	Point	A3F00	0.15	0.6	
1296	Point	A3F03	1.18	1.1	
2154	Point	A3H08	1.25	0.6	
2892	Point	A3H74	0.54	0.5	
1495	Point	A3F71	0.62	0.7	
1588	Point	A3G05	0.9	0.7	
1811	Point	A3G07	0.62	0.9	
1516	Point	A3GAD	0.95	0.6	
1670	Point	A3G0P	0.86	0.6	
1699	Point	A3H0X	1.52	0.7	
1600	Point	A3G1D	0.57	0.7	
1335	Point	A3EQ	0.21	0.6	

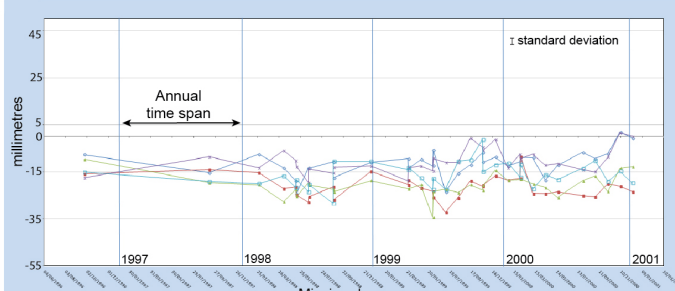
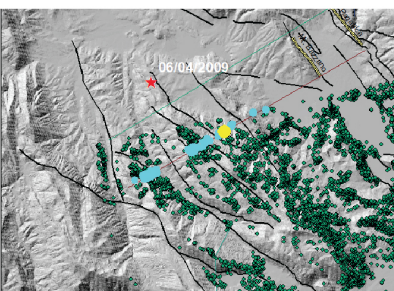
Permanent Scatterers location



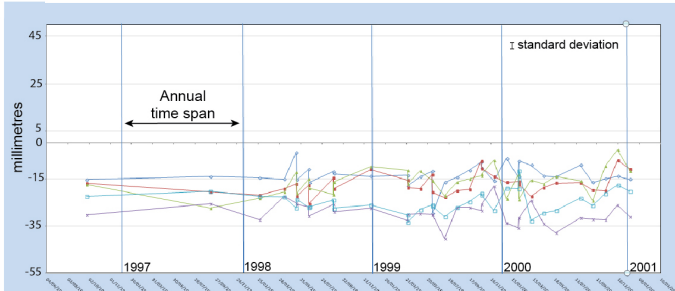
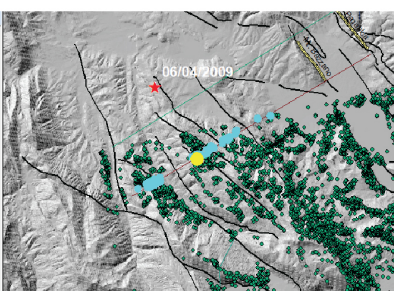
Permanent Scatterers time series



Point	Shape	CODE	VEL	V	STDE
1033	Point	A8B09	1.42	0.5	
1036	Point	A8B08	0.25	0.7	
1038	Point	A8B09	0.25	0.4	
1039	Point	A8B10	0.27	0.7	
1037	Point	A8B18	1.5	0.6	
1036	Point	A8T0C	1.14	0.9	
1039	Point	A8T0V	1.22	0.7	
1038	Point	A8T0C	1.5	1.1	
1037	Point	A8T0H	1.15	0.8	
1136	Point	A8T0Z	2.21	0.7	
1122	Point	A8B05	-0.19	0.9	
1138	Point	A8T0Z	-4.67	0.6	
1131	Point	A8L1G	0.58	0.8	
1146	Point	A8H09	-0.19	0.7	
1135	Point	A8B08	-1.52	0.7	
1137	Point	A8T0P	0.95	0.7	
1141	Point	A8T0T	0.95	0.7	
1146	Point	A8H42	-5.1	0.7	
1142	Point	A8B09	-2.31	0.6	
1146	Point	A8B08	-2.62	0.7	
1153	Point	A8T0Z	-4.42	0.7	
9763	Point	A8B0T	-6.08	0	
9853	Point	A8B09	-1.52	1.1	
9851	Point	A8B05	-4.57	0.6	
9844	Point	A8B0A	-1.64	0.6	



Point	Shape	CODE	VEL	V	STDE
1033	Point	A8B09	1.31	0.5	
1037	Point	A8B09	0.3	0.7	
1039	Point	A8H42	-5.02	0.7	
1032	Point	A8B49	1.94	0.5	
1033	Point	A8B08	-0.63	0.7	
1041	Point	A8B08	1.94	0.6	
1030	Point	A8L1L	1.52	0.7	
1031	Point	A8B0Z	0.77	0.7	
1032	Point	A8B11	-1.98	0.5	
1029	Point	A8B2M	0.22	0.7	
1031	Point	A8B0Z	0.19	0.7	
1033	Point	A8B0Z	1.52	0.7	
1019	Point	A8B0E	0.84	0.7	
1017	Point	A8B0H	0.47	0.7	
1021	Point	A8B0K	0.64	0.7	
1020	Point	A8B0H	1.23	0.7	
1031	Point	A8T0V	1.64	0.6	
1033	Point	A8T0G	-1.58	0.7	
1021	Point	A8T0G	-0.28	0.8	
1028	Point	A8S1G	2.62	0.6	
1040	Point	A8T0T	0.42	0.7	
1033	Point	A8B0C	0.86	0.7	
1031	Point	A8T0P	-0.65	0.7	
1029	Point	A8B0E	1.32	0.7	
1023	Point	A8B0V	1.42	0.6	
1028	Point	A8B0U	0.53	0.7	



Point	Shape	CODE	VEL	V	STDE
1033	Point	A8B08	0.89	0.7	
1074	Point	A8B0T	1.7	0.7	
1039	Point	A8L4T	2.47	0.7	
1075	Point	A8B2P	1.65	0.7	
1034	Point	A8B0K	1.97	0.6	
1071	Point	A8B03	1.65	0.6	
1074	Point	A8B0Q	2.59	0.6	
1073	Point	A8B0T	1.51	0.7	
1033	Point	A8B0R	0.95	0.7	
1079	Point	A8L0F	2.49	0.7	
1073	Point	A8B0H	1.39	0.7	
1073	Point	A8B0X	0.53	0.6	
1077	Point	A8L1V	1.41	0.7	
1051	Point	A8B0K	2.85	0.6	
1075	Point	A8B1L	2.07	0.7	
1074	Point	A8B0P	3.6	0.6	
1079	Point	A8L2S	1.72	0.7	
1075	Point	A8B0C	1.82	0.7	
1078	Point	A8L2P	-0.95	0.7	
1079	Point	A8B0E	0.86	0.7	
1074	Point	A8B0R	0.8	0.6	
1074	Point	A8B0S	1.07	0.7	
1077	Point	A8L0B	0.86	0.7	
1057	Point	A8B0S	0.82	0.7	
1059	Point	A8B0X	1.26	0.7	
1075	Point	A8B0C	2.82	0.7	

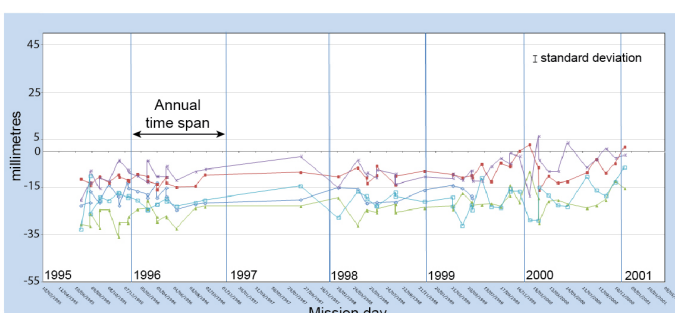
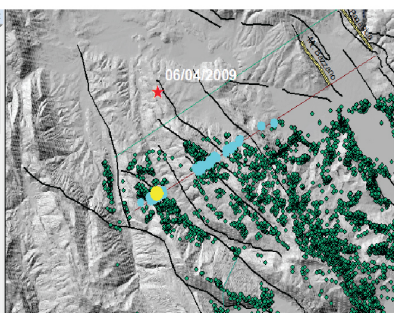


Figure S3. Examples of raw time series of Permanent Scatterers obtained from ERS ascending orbit images. The column in the right side shows time series of groups of closely spaced PS, with indication of correlative locations (yellow dots in images in the central column) and codes, shown in the table images reported in the column in the left side. The error bars represent standard deviation of the measurements.