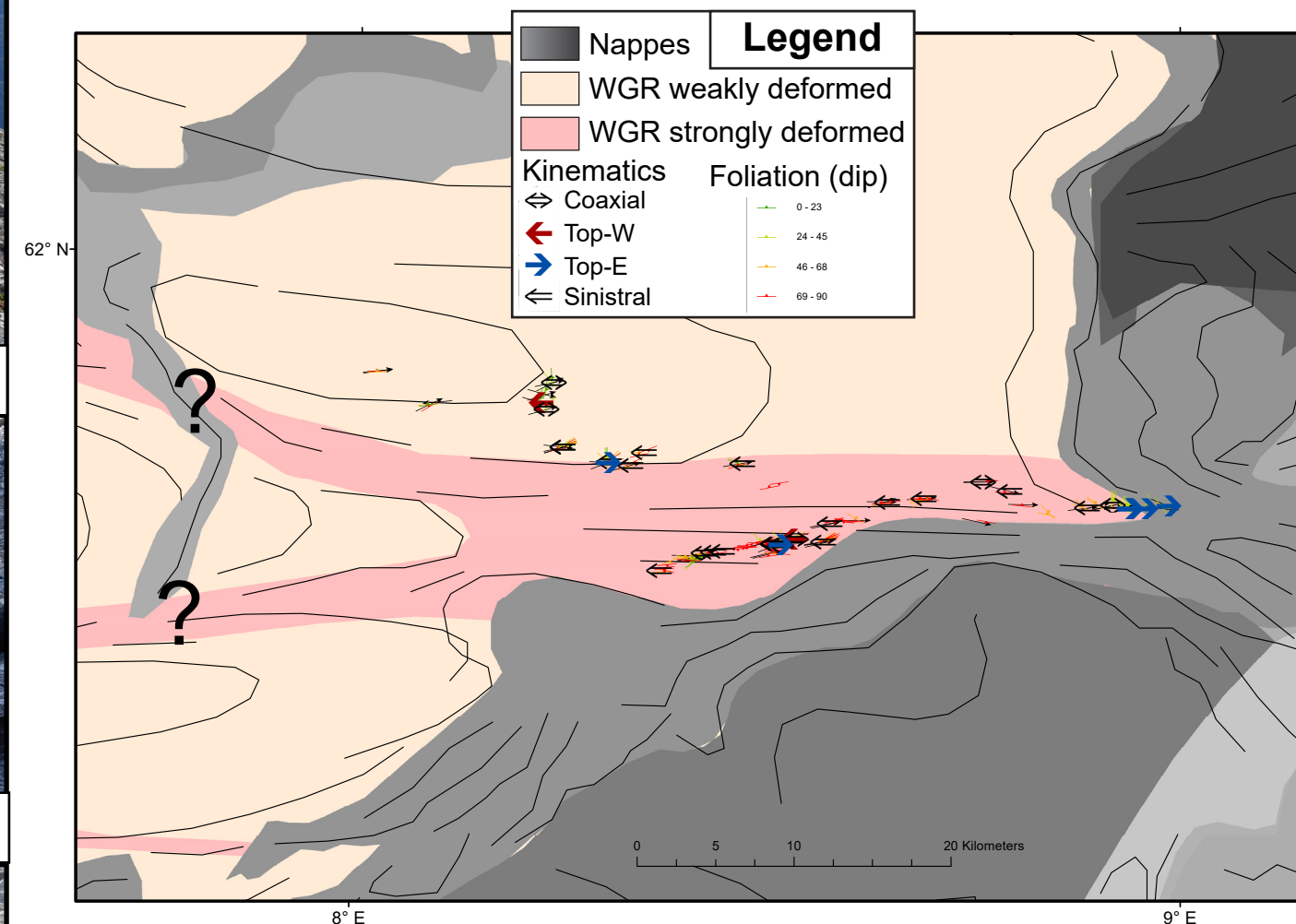


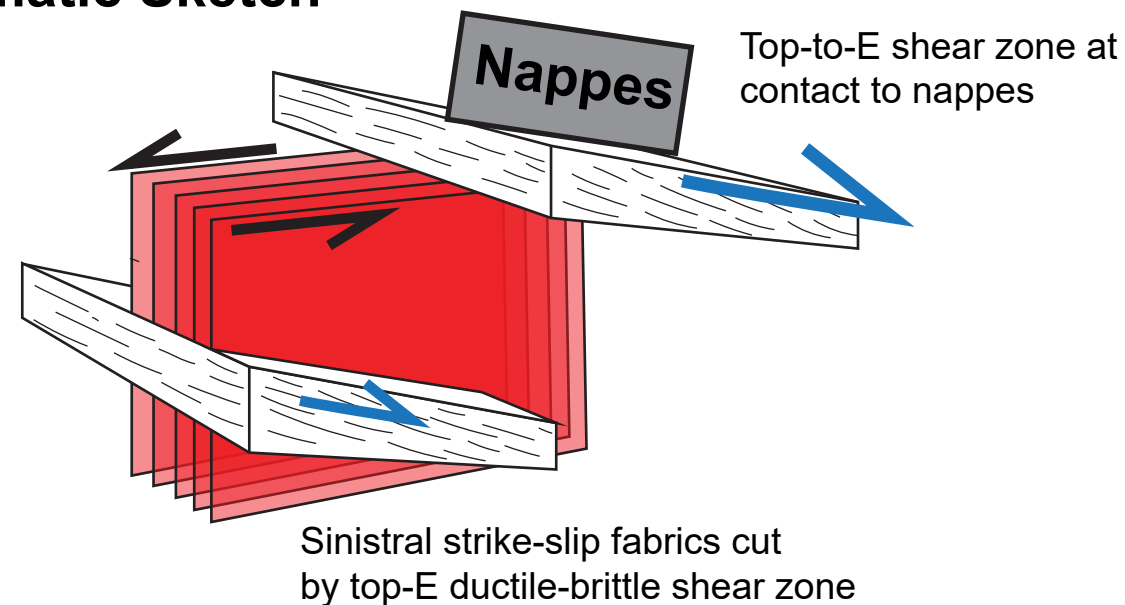
Lom Shear Zone - Reconnaissance Mapping



Field Photos

a: Steep mylonitic foliations on Lomseggje (Eggjapiken). Outside of the picture, these are cut by a low-angle top-E shear zone. b: Steep mylonitic foliation with sinistral kinematic indicators. Storivilen. c: L-tectonite preserving magmatic textures in the lineation-perpendicular section. Veslivilen. d: Migmatite (right side) transformed into banded gneiss (left side). Tronoodden. e: S-C mylonite with sinistral fabrics and syn-kinematic quartz vein (top).

Schematic Sketch



Structural Data

■ Lineation (n = 69)
● Foliation (n = 159)

