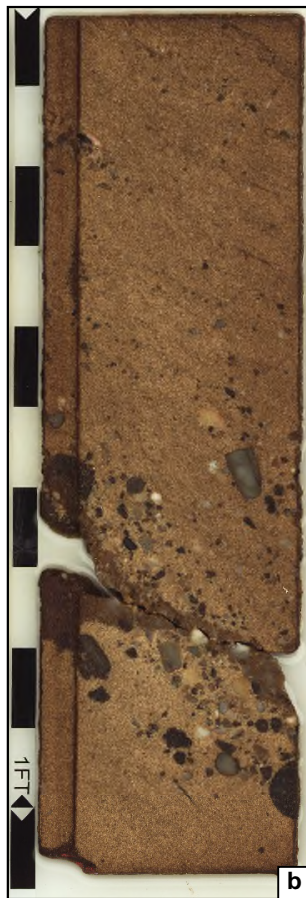




Bioturbated sandstone



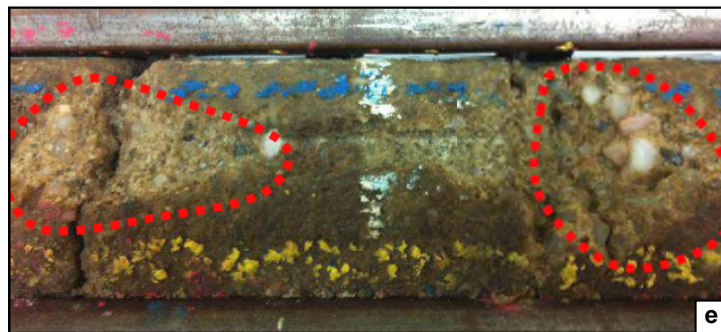
Transgressive lag



Massive structureless sandstone



Transgressive lag



Weak zones

Supplementary material 1. Core photos from the 15/20a-19 well showing the transgressive lag and massive structureless sandstone (**a - d**). Zones of weakness are evident around the pebbly sandstone (**e**) on the images following the scratch test for geomechanical testing.