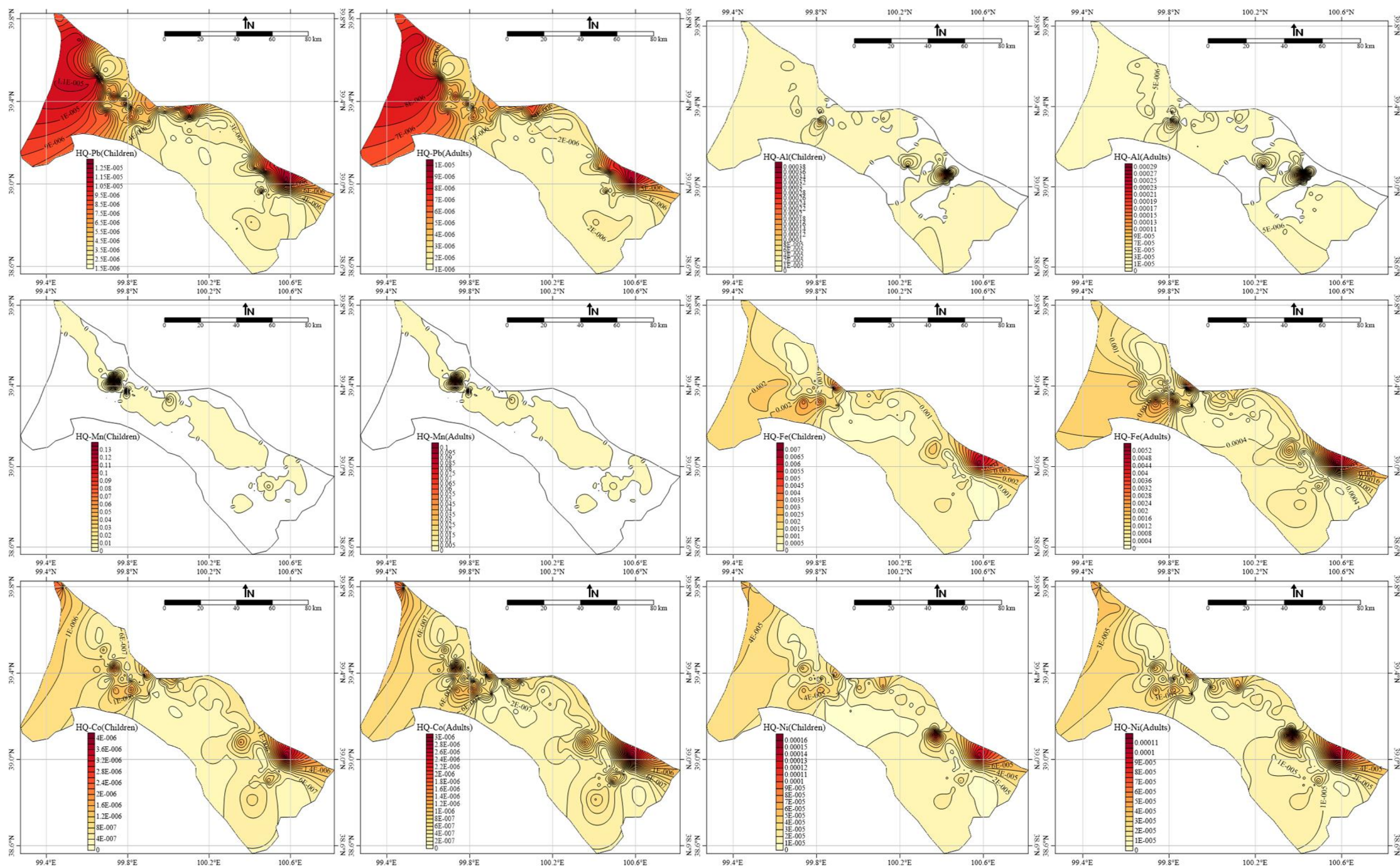
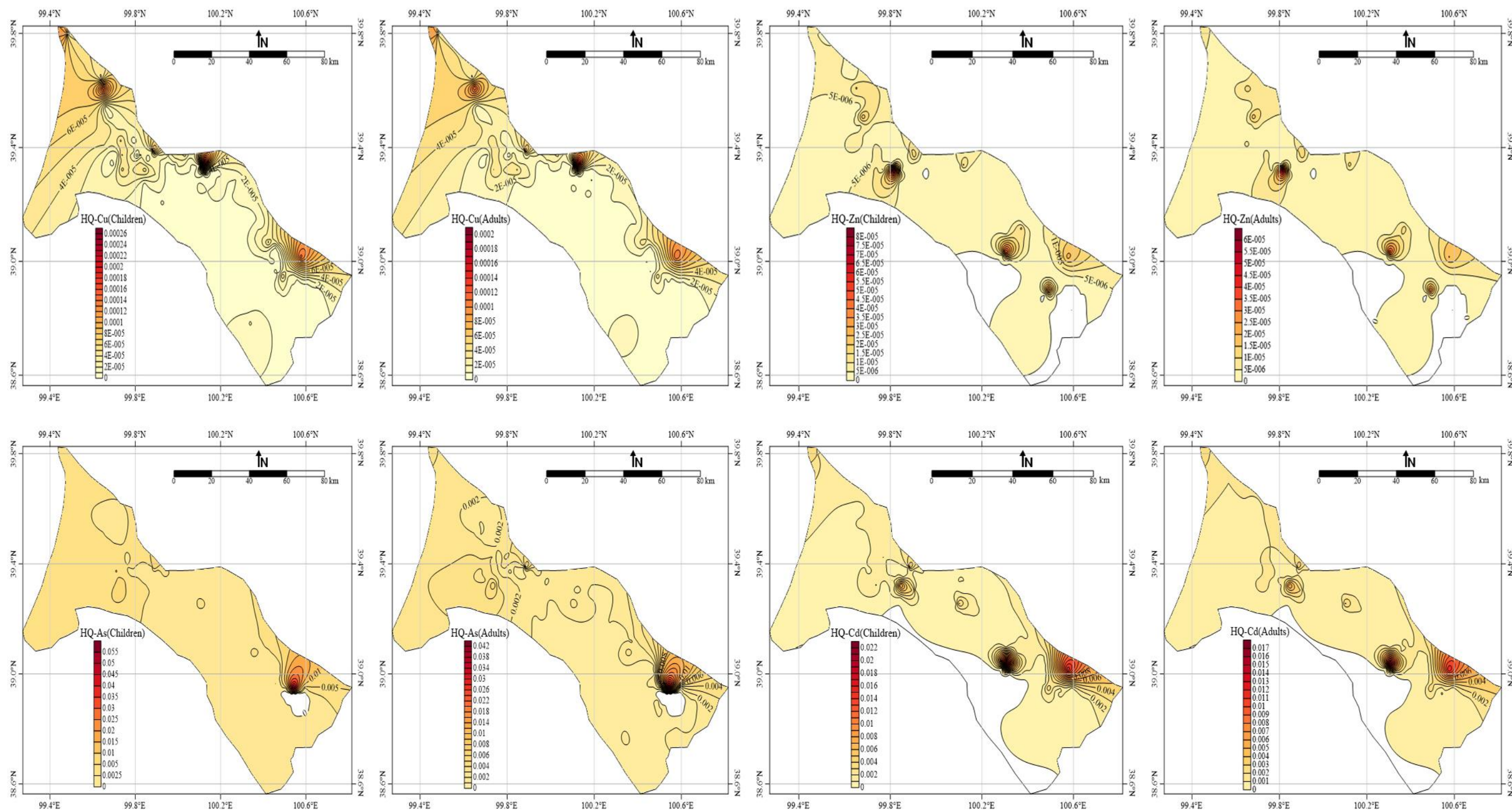


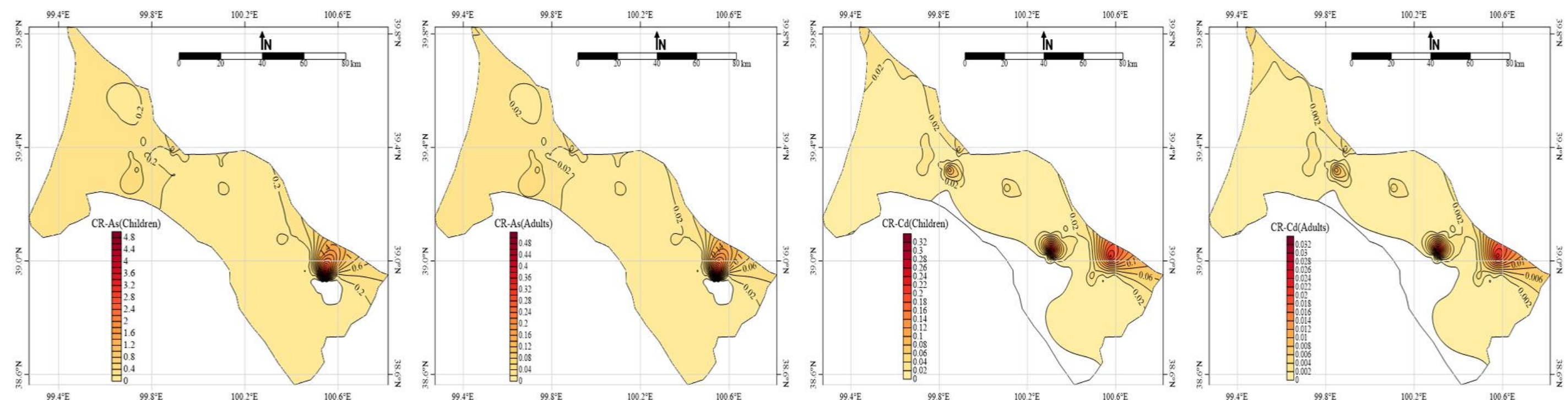
Ingestion pathway



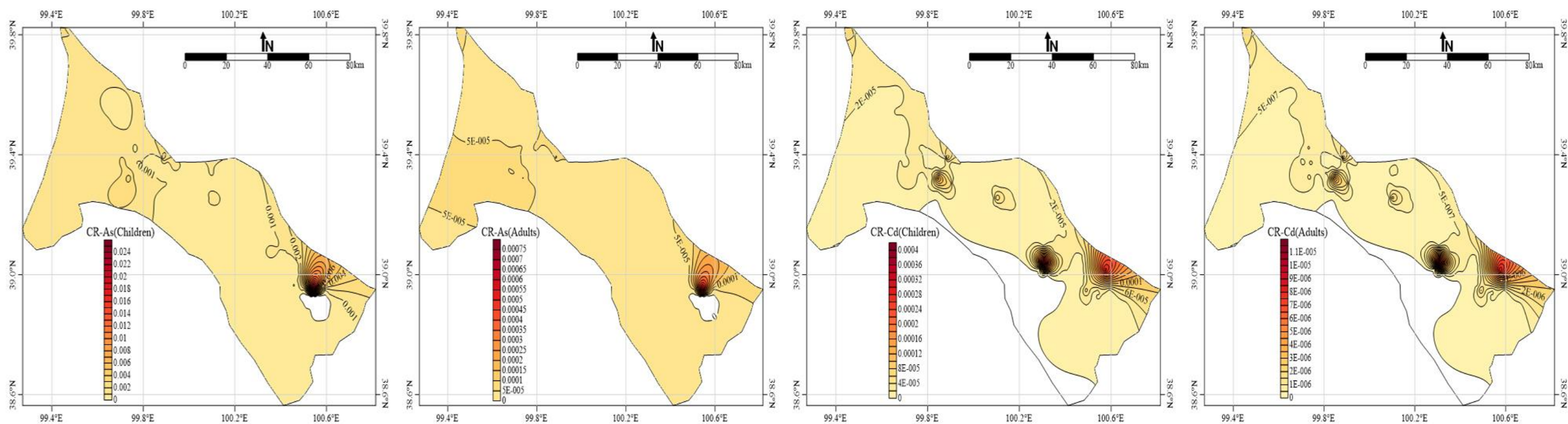


Dermal contact pathway

Fig. S1. Spatial distribution of non-carcinogenic risks of heavy metals in groundwater through ingestion and dermal contact pathway. HQ represent hazard quotient.



Ingestion pathway



Dermal contact pathway

Fig. S2. Spatial distribution of cancer risks of heavy metals in groundwater through ingestion and dermal contact pathway. CR represents cancer risk

