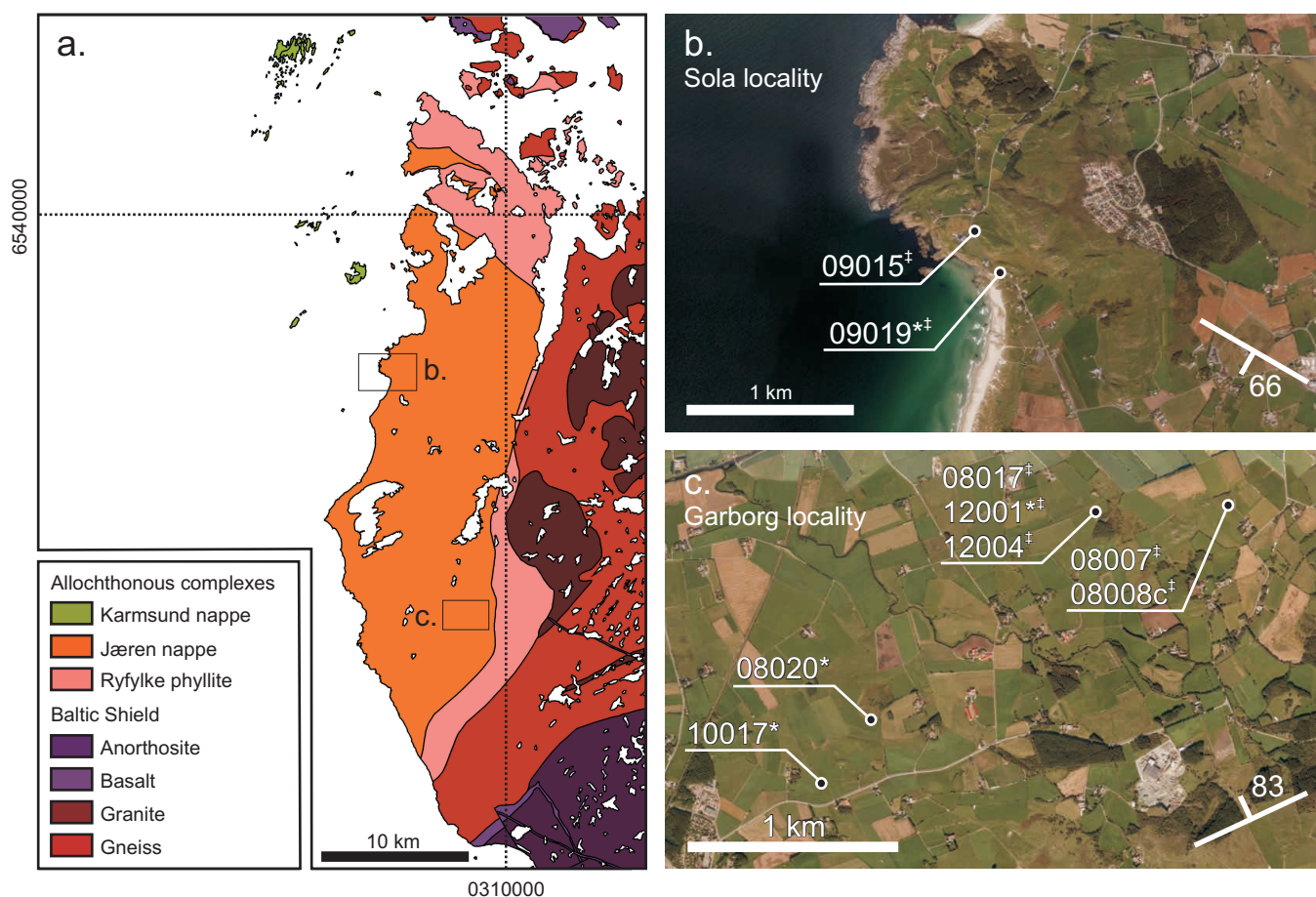


**Appendix A:** Geological map after Maijer et al. (a; 1987), illustrating the locations of the Sola and Garborg sample localities shown on the areal photographs (b) and (c), respectively ([www.norgebilder.no](http://www.norgebilder.no)). The average orientation of the regional amphibolite-facies foliation in these areas is indicated on the lower right of the areal photographs. Sample coordinates are given in the table below.



Sample	UTM N	UTM E	Lithology
08007	6510566	0309024	grt+bt+phe+qtz gneiss (metapelite)
08008c	6510556	0309034	ep+phe+qtz gneiss (metagreywacke)
08017	6510451	0308236	grt+ky+bt+qtz gneiss (metapelite)
08020	6508905	0306867	quartzite (metasandstone)
09015	6528357	0301517	grt+bt+chl+qtz gneiss (metapelite)
09019	6528154	0301649	grt+amp+phe+qtz gneiss (metagreywacke)
10017	6508872	0306482	grt+qtz gneiss (metasandstone)
12001	6510426	0308227	bt+phe+qtz gneiss (metapelite)
12004	6510464	0308225	grt+amp+bt+pl+qtz gneiss (metagreywacke)