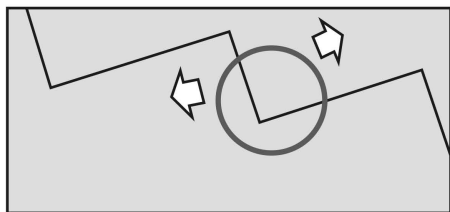
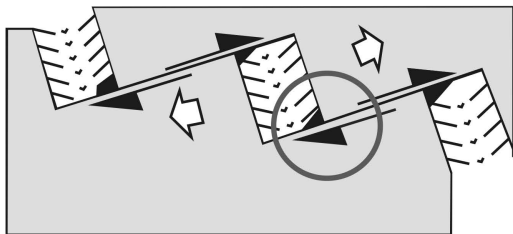


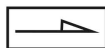
I



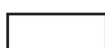
II



Divergence

Transform motion between
continental crustsTransform motion between
oceanic crustsContinental crust
of normal thickness

Thinned continental crust



Oceanic crust

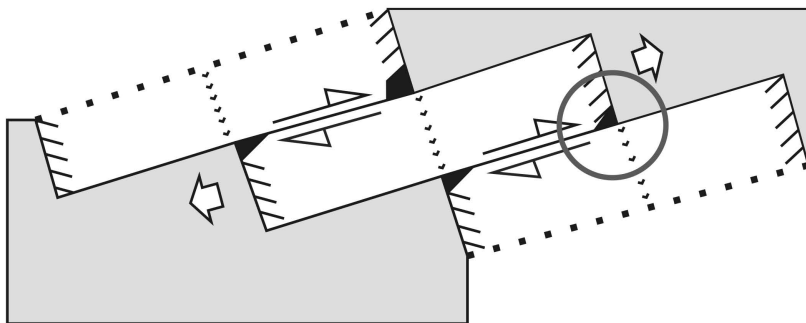


Axis of mid-ocean ridge

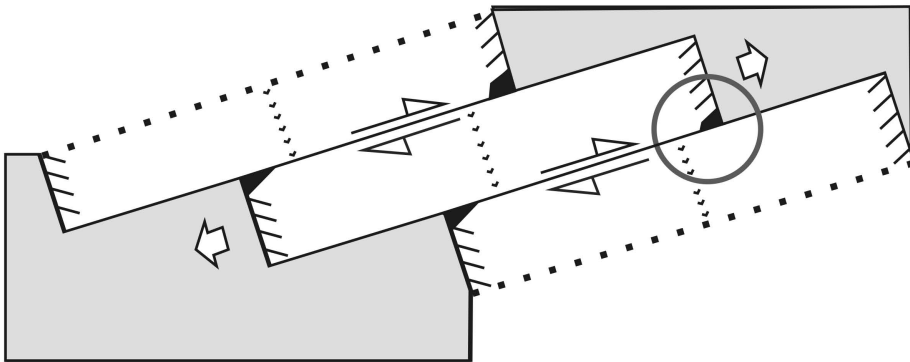


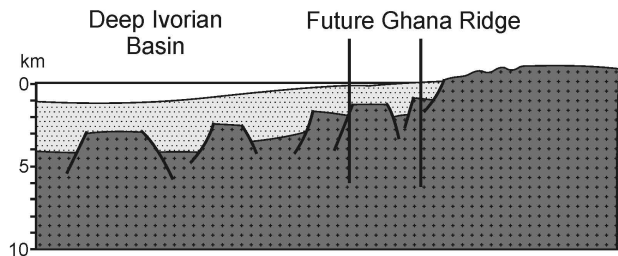
Marginal ridge

III

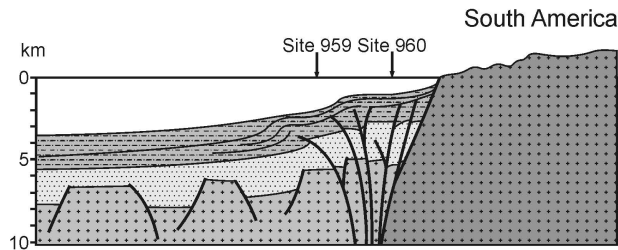


IV

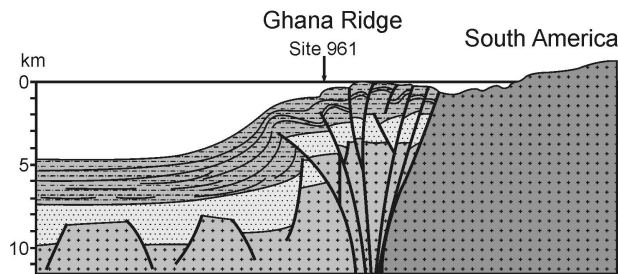




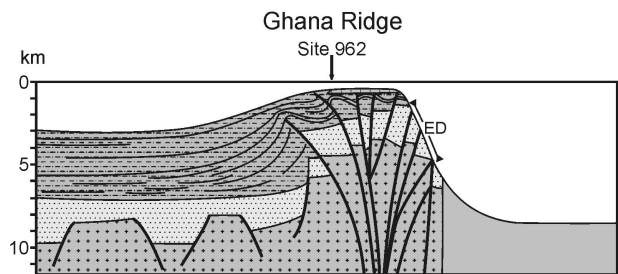
1. Rifting stage, Early Cretaceous



2. Syn-transform stage, Aptian-Albian



3. End of syn-transform stage, late Albian



4. Passive margin stage, Late Cretaceous

